

Bus Terminal Žabica



Project number · 123

Project name · Bus Terminal Žabica

Location · Krešimir street - Žabica street - Riva

City · Rijeka

Country · Croatia

Type · invited competition, winner

Client · City of Rijeka

Site area · 14818 m²

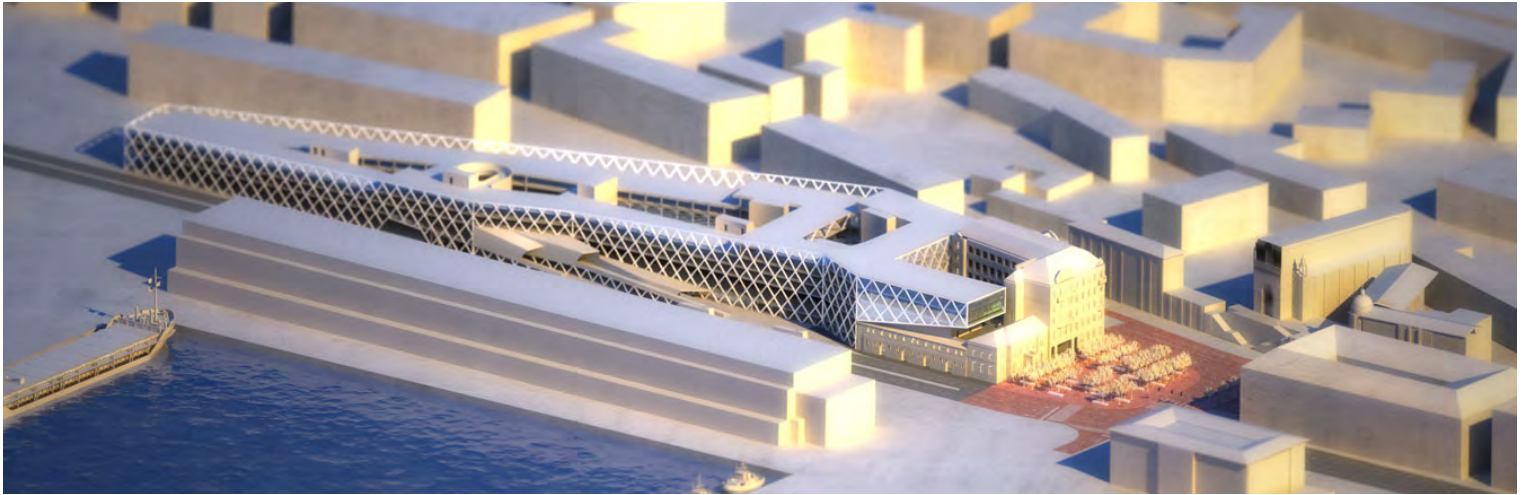
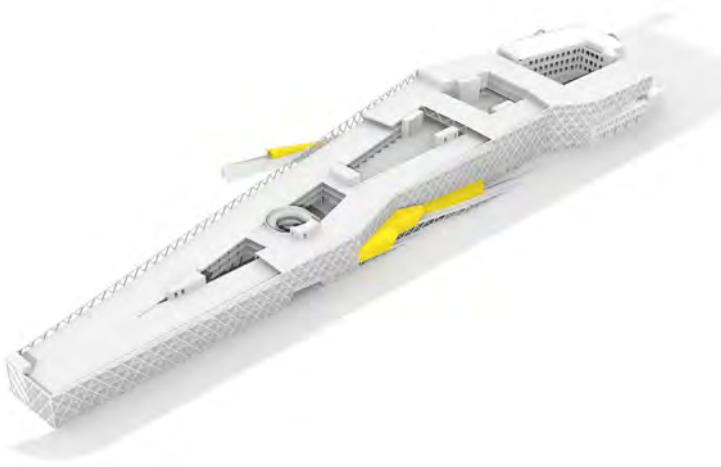
Gross floor surface · 55246 m²

Footprint · 13258 m²

Project · 2005-

Project team · Saša Begović, Marko Dabrović, Tatjana Grozdanić Begović, Silvije, Novak, Tin Kavurić, Krunoslav Szoersen, Dragana Šimić, Joško Kotula, Tomislav Soldo, Josipa Knez, Margareta Spajić

3D · Boris Goreta



The project for the new bus terminal and a garage for 900 cars in Rijeka is one of the first steps in the “conquest” of the Rijeka port area, which is slowly beginning to open up the city.

The site is located in a part of the port of Rijeka which has always been closed to the public, between the railway stations, freight terminals and the passenger ferry. One of the determining design factors is the difference in scale between the port warehouses on one side and the city blocks on the other.

The new terminal building with 300 meters in length reminiscent of the massive warehouses, while the urban blocks determine the height dimensions and the zoning of the house - blocks with atriums. The area of the new terminal is surrounded by all kinds of transport - rail, cargo, port, road and pedestrian, so the new building infrastructure has become an urban strategy, a lot more than just architecture. The shopping area, the bus terminal with 18 platforms, bus depot for 14 buses and a public garage for 900 cars are located inside the terminal building, commercial and public facilities on the upper floors and a multi-purpose hall in the restored part of the existing warehouse.

Pedestrian access points are provided from Krešimirova street, newly designed Žabica square and the prolonged Riva street, and they are all connected at the street level of the building, from which they move on higher levels. An accessible and quality pedestrian island of the bus terminal was created through the design process, with access to all of the platforms and no overlapping with



the vehicular traffic. The construction and the facade are made of steel and a kind of a tribute to port cranes and constructions. They also allow a greater construction span and a better design of spaces.